

PART OF THE N.1/2, OF SECTION 36, T.7N., R.2W., S.L.B. & M.
GL SUBDIVISION

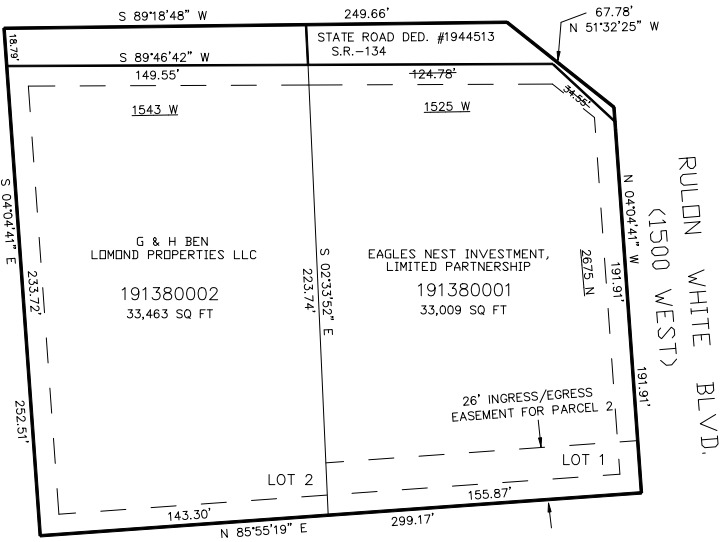
IN WEBER COUNTY
SCALE 1" = 50'

TAXING UNIT: 329

SEE PAGE 59

2700 NORTH STREET

SEE PAGE 59



SEE PAGE 59

SEE PAGE 59

FOR COMPLETE ENG DATA SEE
ORIGINAL DEDICATION PLAT IN
BOOK 50, PAGE 88 OF RECORDS.

10' UTILITY & DRAINAGE EASEMENTS EACH
SIDE OF PROPERTY LINES AS INDICATED
BY DASHED LINES EXCEPT AS OTHERWISE
SHOWN.